



Public Health News and Reports

Straight from the Source

Volume 1

Issue 13

Monday, June 8, 2020

Past issues of "Straight from the Source" can be found at
the Geauga Public Health Website at
www.GPHOhio.org

To get on our GPH "Straight from the Source" email list, email us at:

JGearhart@GeaugaCountyHealth.org

Follow Geauga Public Health on Facebook for posts
from the Geauga County Health Commissioner.

Facebook **@GPHOhio**

Questions and comments via email: **Info@GeaugaCountyHealth.org**

For General Questions about COVID-19, the various state orders, and other important
information, the Ohio Department of Health has a Call Center that is staffed from 9
a.m. to 8 p.m. 7 days/week.

1-833-4-ASK-ODH

1-833-427-5634

**Access the sources public health professionals use
for credible COVID-19 information.**

Visit the ODH Website at www.Coronavirus.Ohio.Gov

Visit the CDC Website at www.cdc.gov/coronavirus

CURRENT HOSPITAL NEWS

Cleveland Clinic Newsroom: <https://newsroom.clevelandclinic.org/category/news-releases/>

University Hospitals Newsroom: <https://news.uhhospitals.org/>

MetroHealth Newsroom: <https://news.metrohealth.org/>

Cleveland VA Medical Center Newsroom: <https://www.cleveland.va.gov/features/index.asp>

The **Geauga County Board of Health** regular monthly meeting occurs on the 4th Wednesday of each month
at 5:00pm in Building #8 at 470 Center Street in Chardon, Ohio. There is an opportunity for public comment.

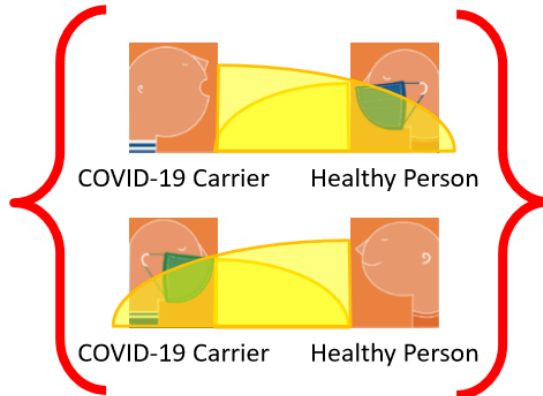
MASKS MATTER

VERY RISKY



COVID-19 Carrier Healthy Person

STILL RISKY



**You don't
know if
you are a
carrier or
not.**

BETTER



COVID-19 Carrier Healthy Person

BEST!



COVID-19 Carrier

Healthy Person



Geauga Public Health

We need to learn from your experiences as businesses reopen. What do you see that makes you feel safer? Where are the opportunities to improve practices that would make you feel safer as a customer?

Please use the link below to take a brief survey about what prevention practices you are seeing and what impact it has on your decisions of where to shop safely.

https://www.surveymonkey.com/r/Geauga_Public_Input_COVID-19

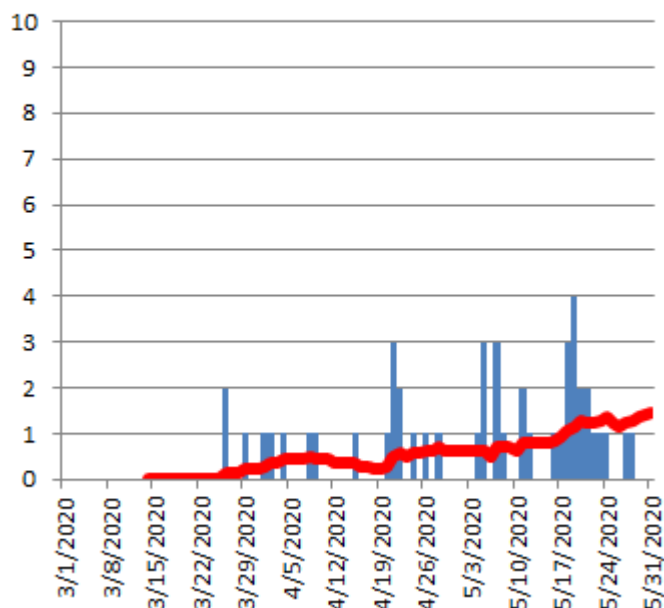
Community Input Survey Results can be found at the Geauga Public Health web page at:

www.GPHOhio.org

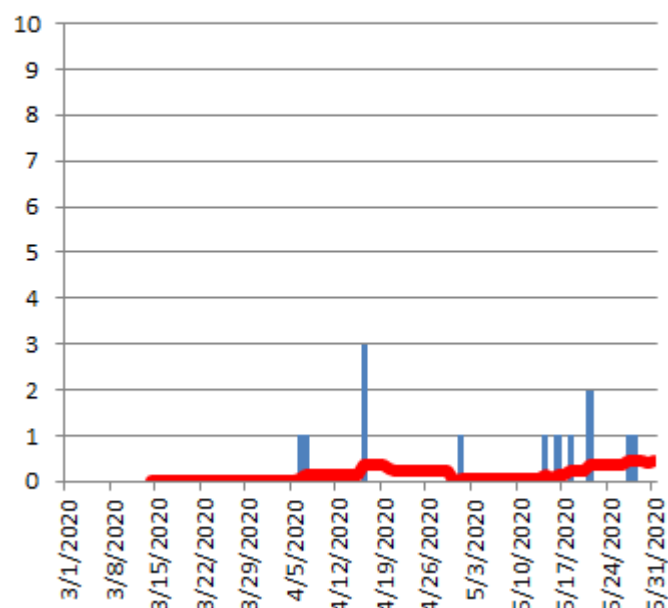
Trends in newly reported confirmed cases of COVID-19 by region in Geauga County, Ohio

(March 1-May28, 2020)

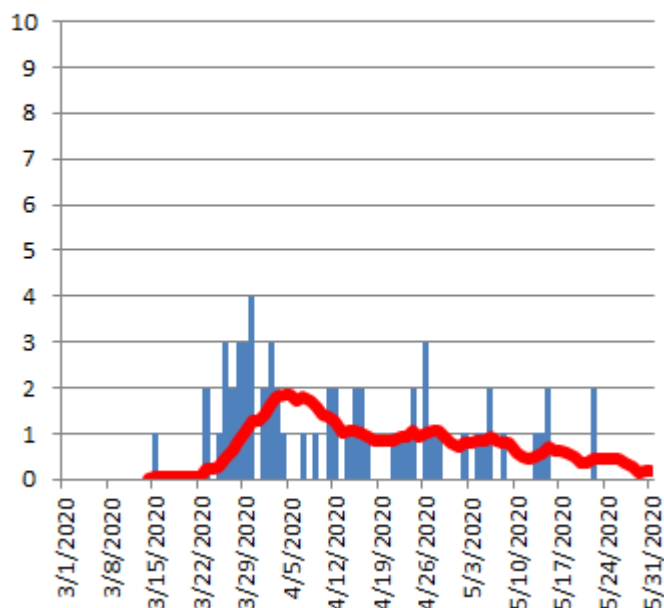
NW Geauga County
Reported Cases of COVID-19
(2-week rolling average in red)



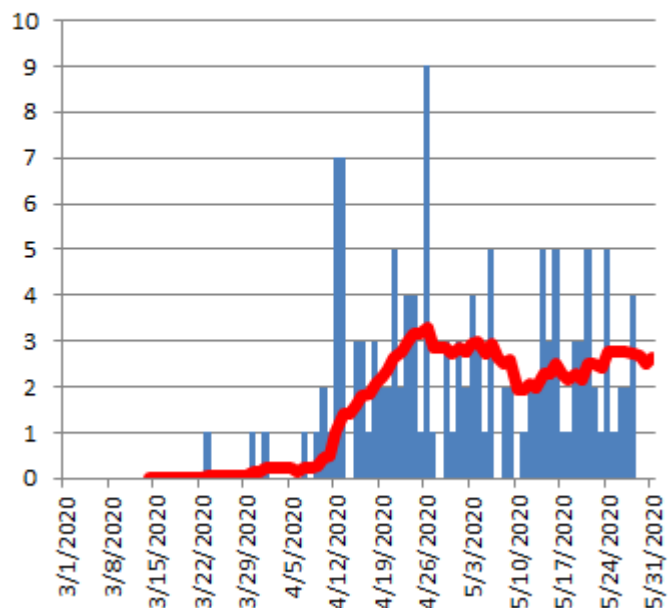
NE Geauga County
Reported Cases of COVID-19
(2-week rolling average in red)



SW Geauga County
Reported Cases of COVID-19
(2-week rolling average in red)



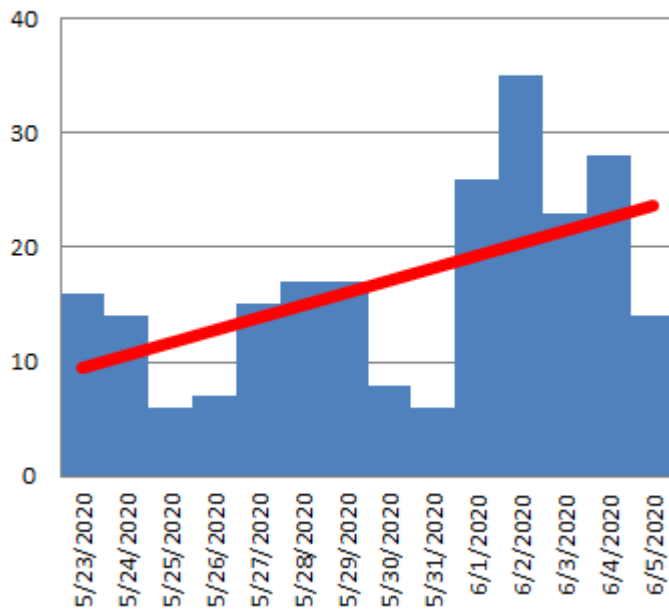
SE Geauga County
Reported Cases of COVID-19
(2-week rolling average in red)



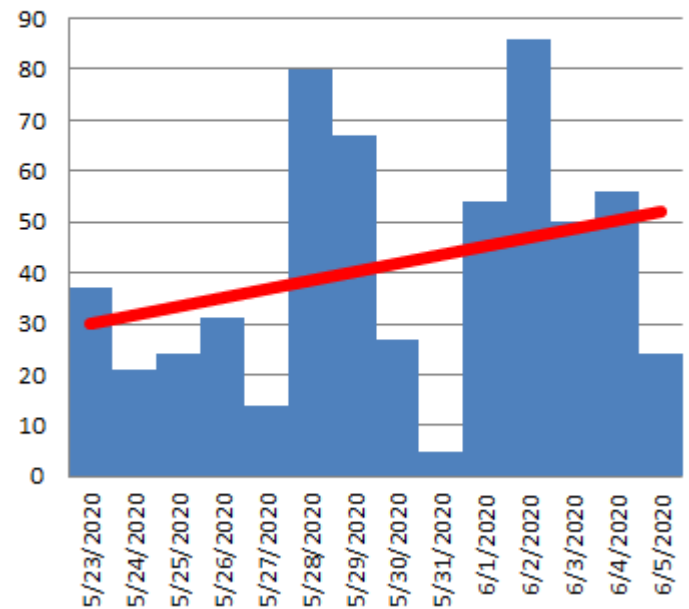
COVID-19 Ohio Daily Case Count by Age Group

Most Recent 2-Week Linear Trend

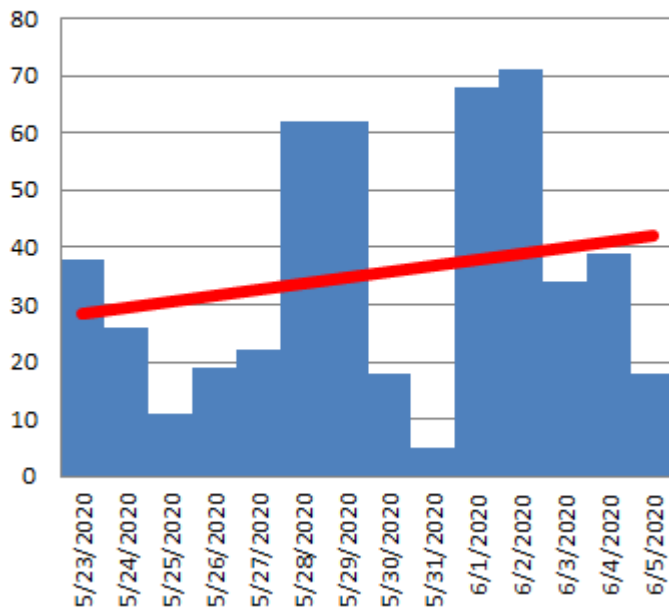
Ages 0-19 Years
Ohio COVID-19 Daily Case Count
Most Recent 2-Week Linear Trend



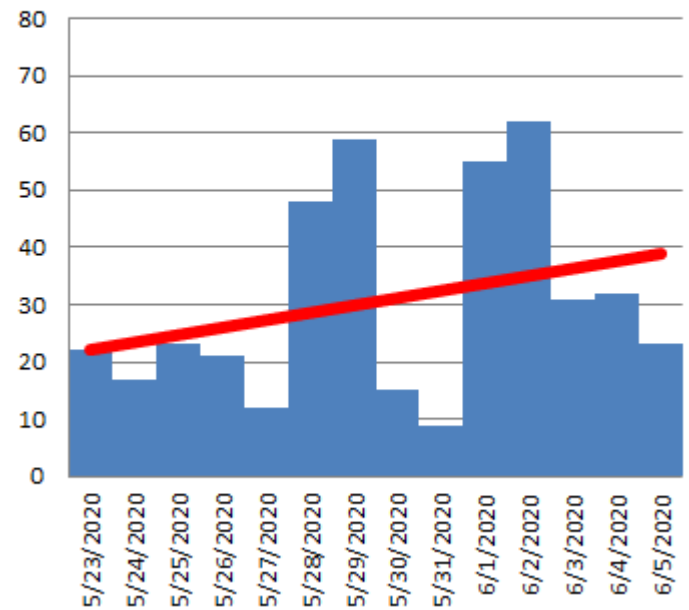
Ages 20-29 Years
Ohio COVID-19 Daily Case Count
Most Recent 2-Week Linear Trend



Ages 30-39 Years
Ohio COVID-19 Daily Case Count
Most Recent 2-Week Linear Trend



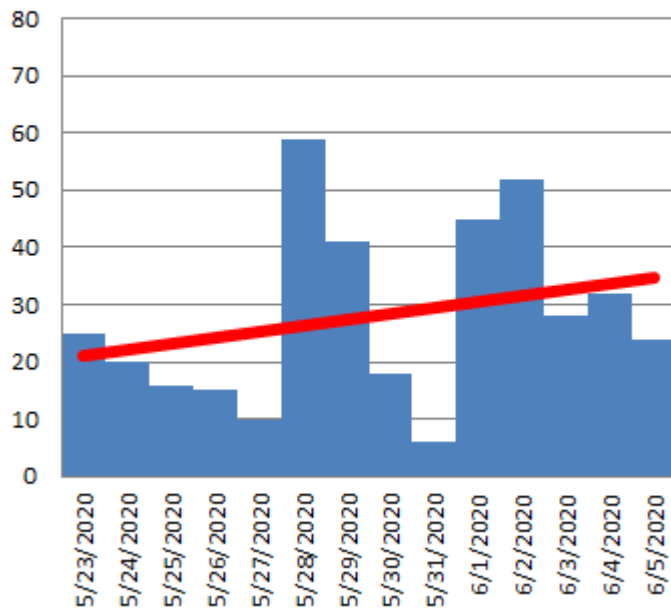
Ages 40-49 Years
Ohio COVID-19 Daily Case Count
Most Recent 2-Week Linear Trend



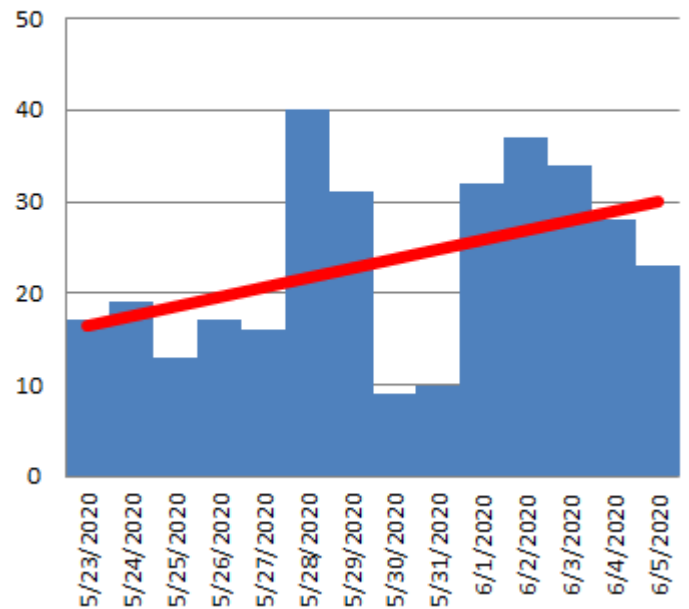
COVID-19 Ohio Daily Case Count by Age Group

Most Recent 2-Week Linear Trend

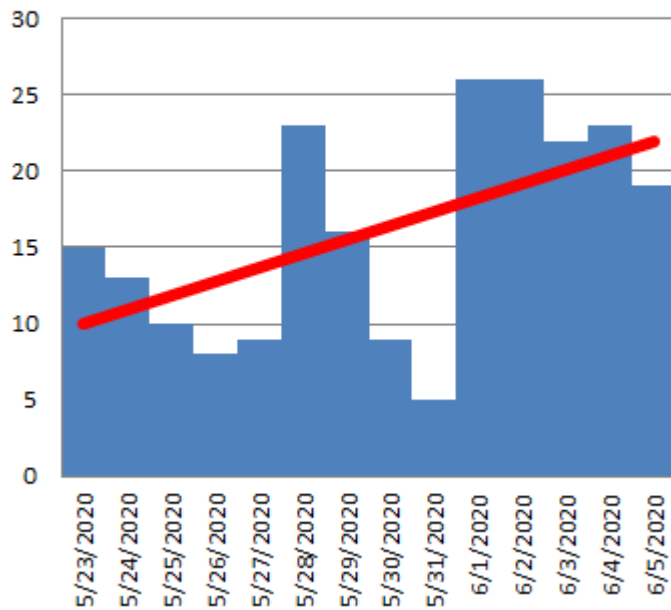
Ages 50-59 Years
Ohio COVID-19 Daily Case Count
Most Recent 2-Week Linear Trend



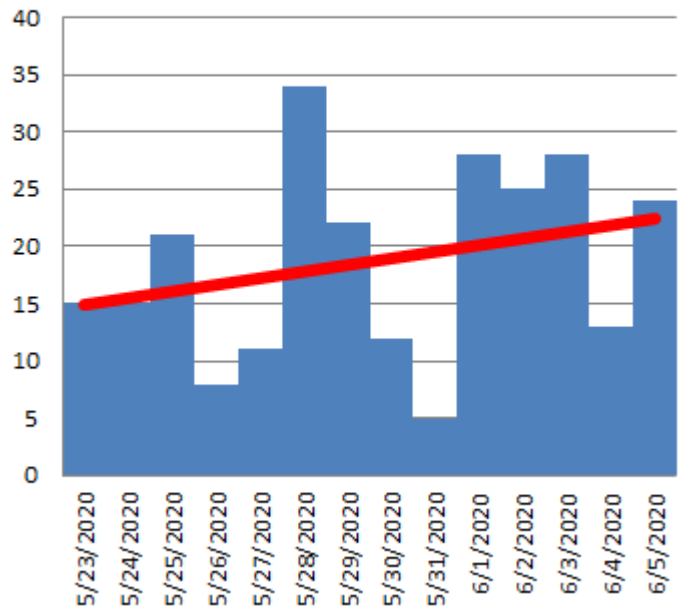
Ages 60-69 Years
Ohio COVID-19 Daily Case Count
Most Recent 2-Week Linear Trend



Ages 70-79 Years
Ohio COVID-19 Daily Case Count
Most Recent 2-Week Linear Trend



Ages 80+ Years
Ohio COVID-19 Daily Case Count
Most Recent 2-Week Linear Trend

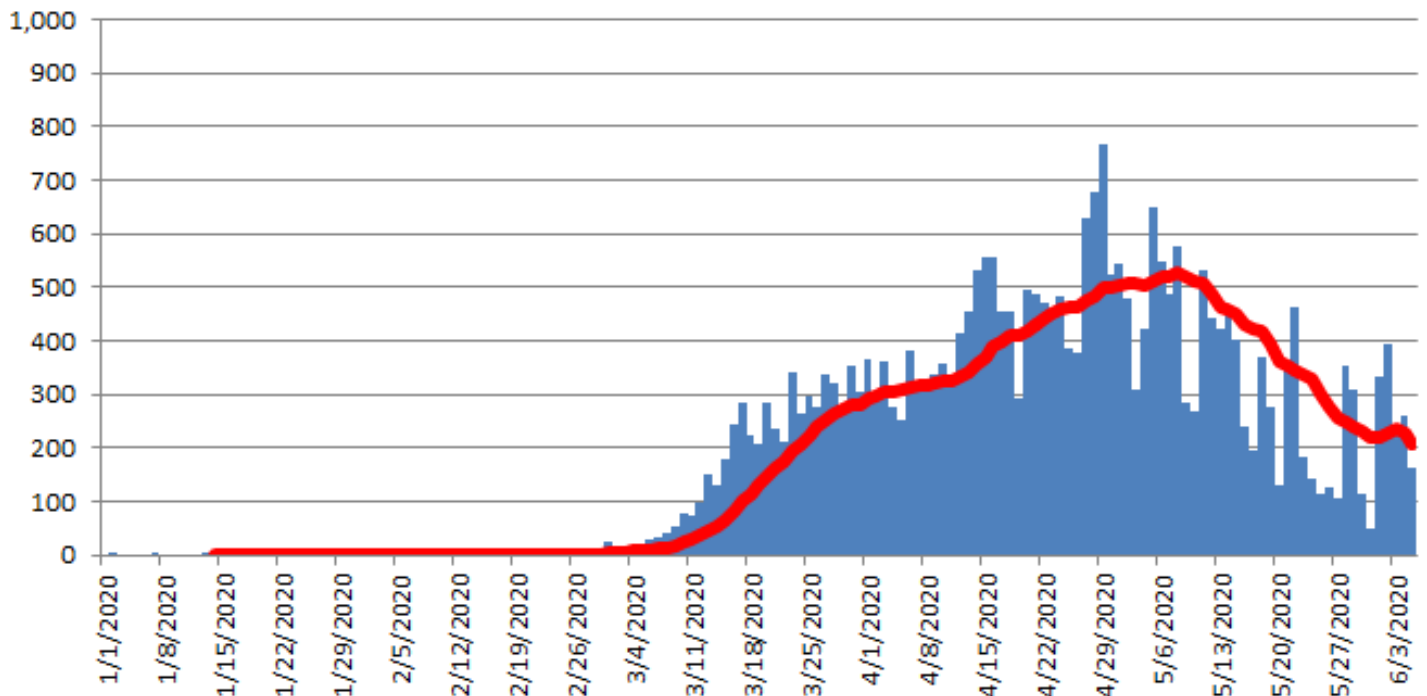


COVID-19 Case Data for Ohio

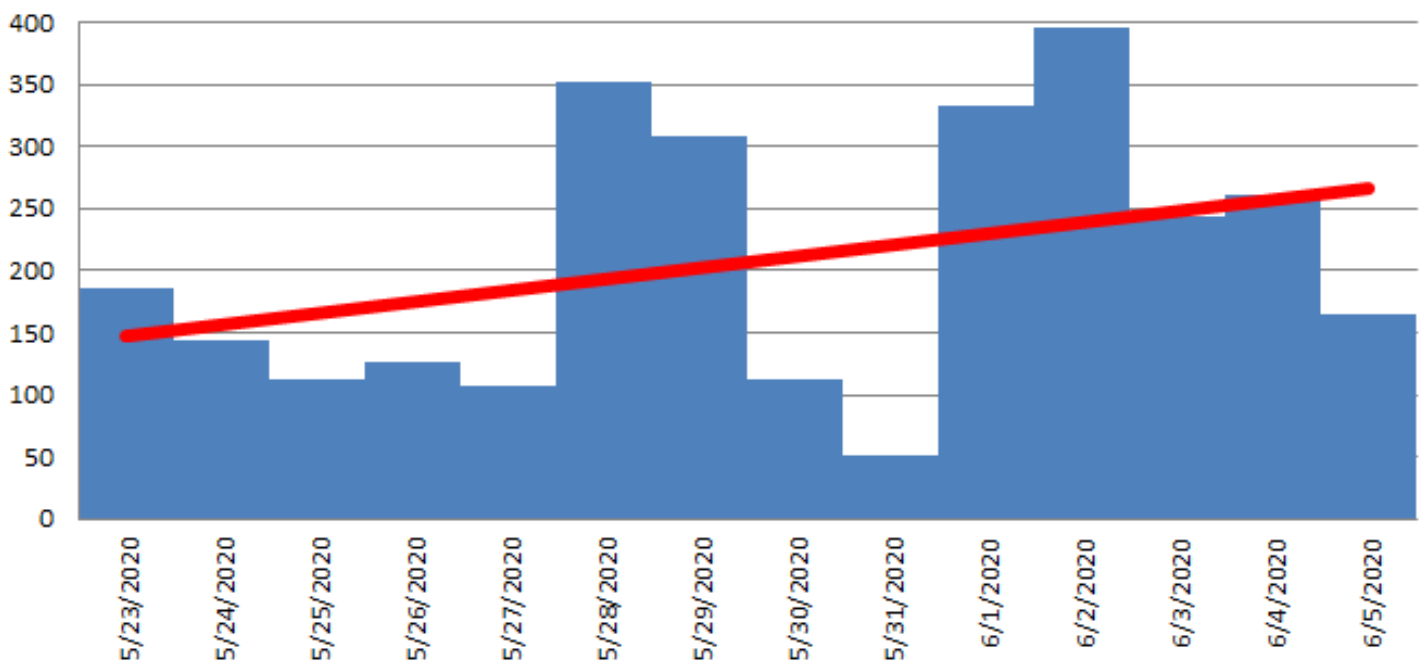
January 1, 2020-June 5, 2020

2-Week Rolling Average and Most Recent 2-Week Linear Trend

**Ohio COVID-19 Daily Case Count
(2-Week Rolling Average Trend in Red)**



**All Ages
Ohio COVID-19 Daily Case Count
Most Recent 2-Week Linear Trend**

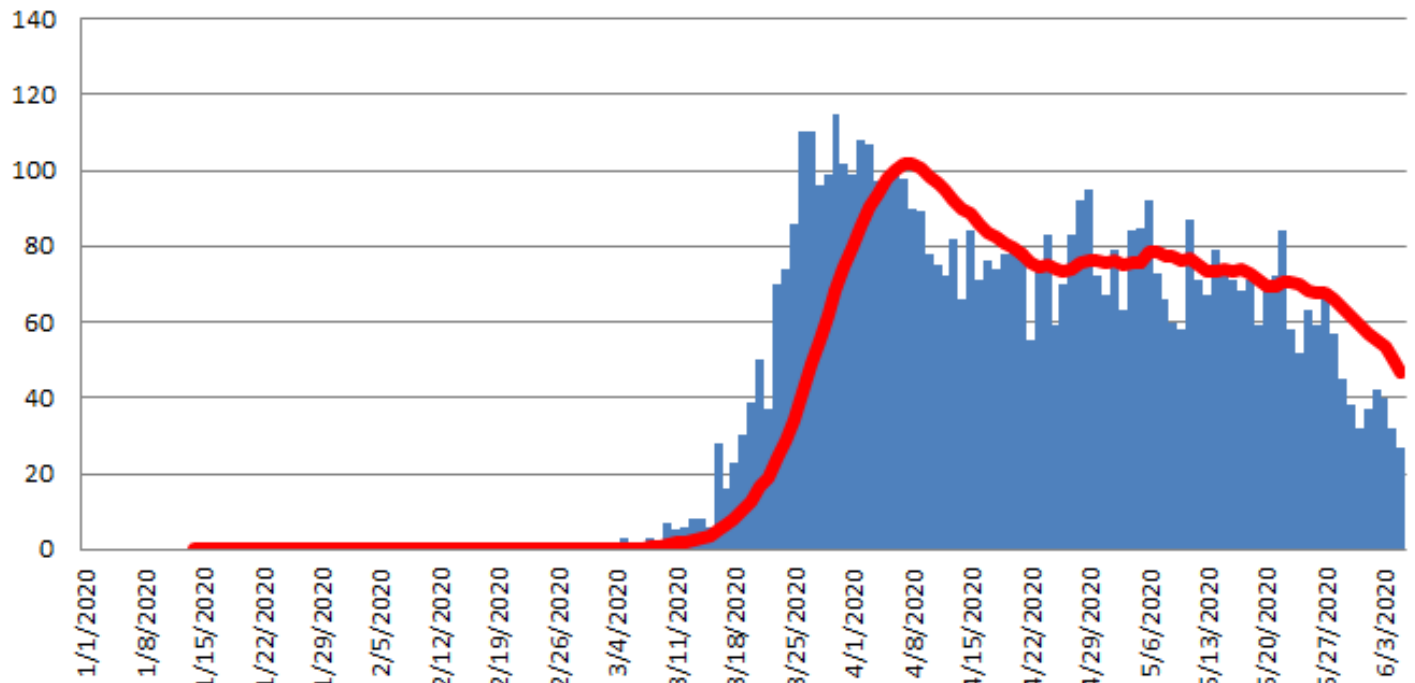


COVID-19 Hospitalization Data for Ohio

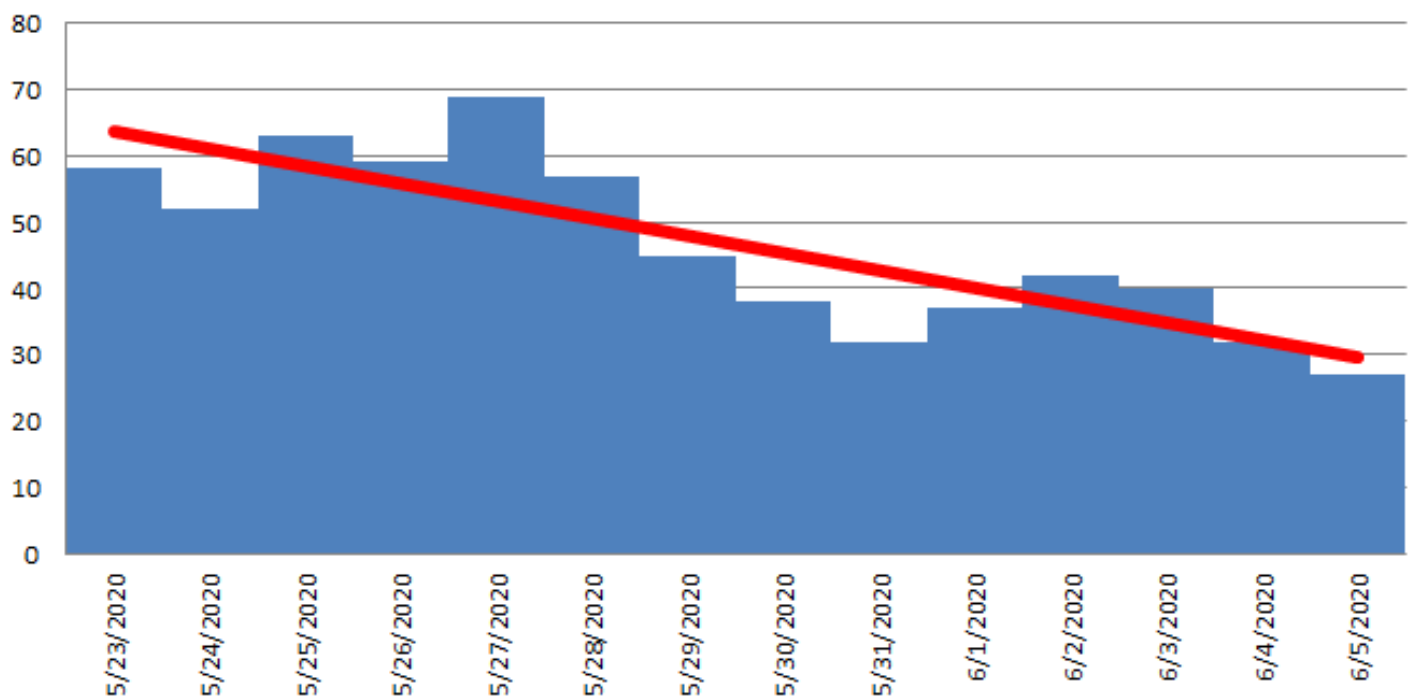
January 1, 2020-June 5, 2020

2-Week Rolling Average and Most Recent 2-Week Linear Trend

**Ohio COVID-19 Daily Hospitalizations
(2-Week Rolling Average Trend in Red)**



**Ohio COVID-19 Daily Hospitalizations
Most Recent 2-Week Linear Trend**

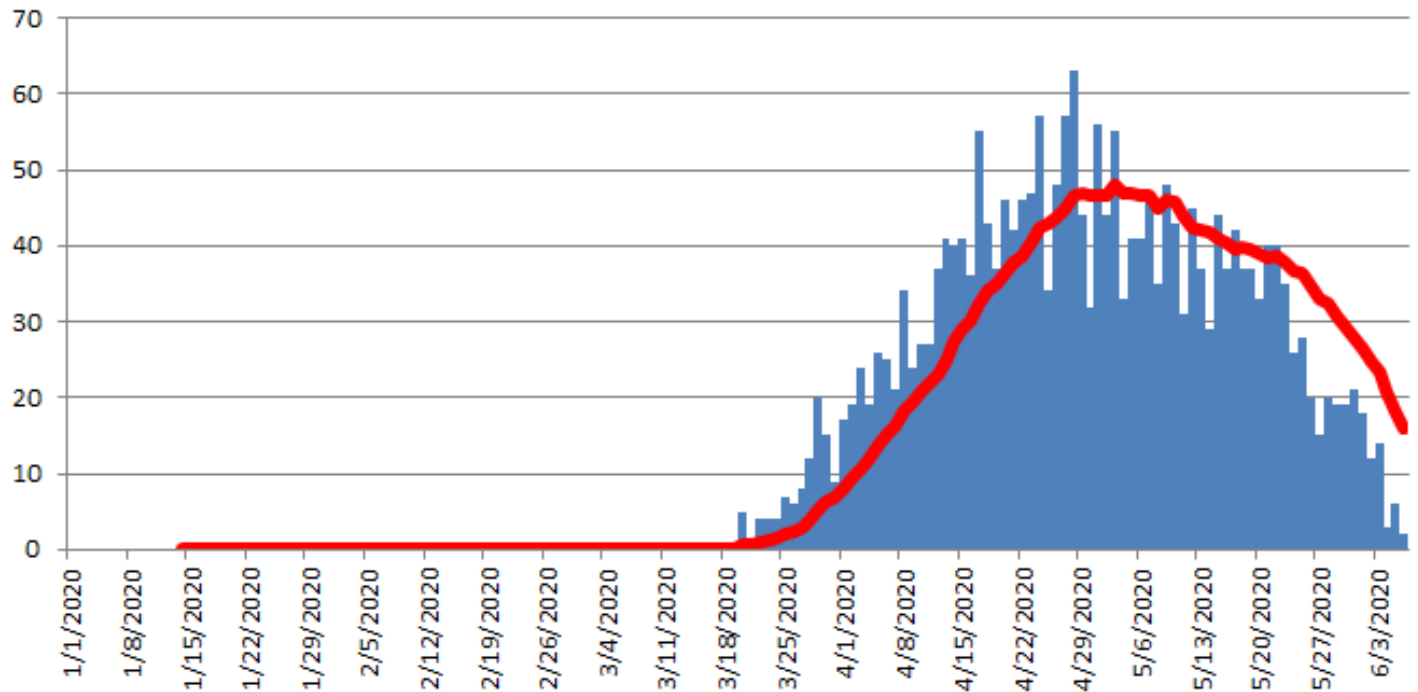


COVID-19 Mortality Data for Ohio

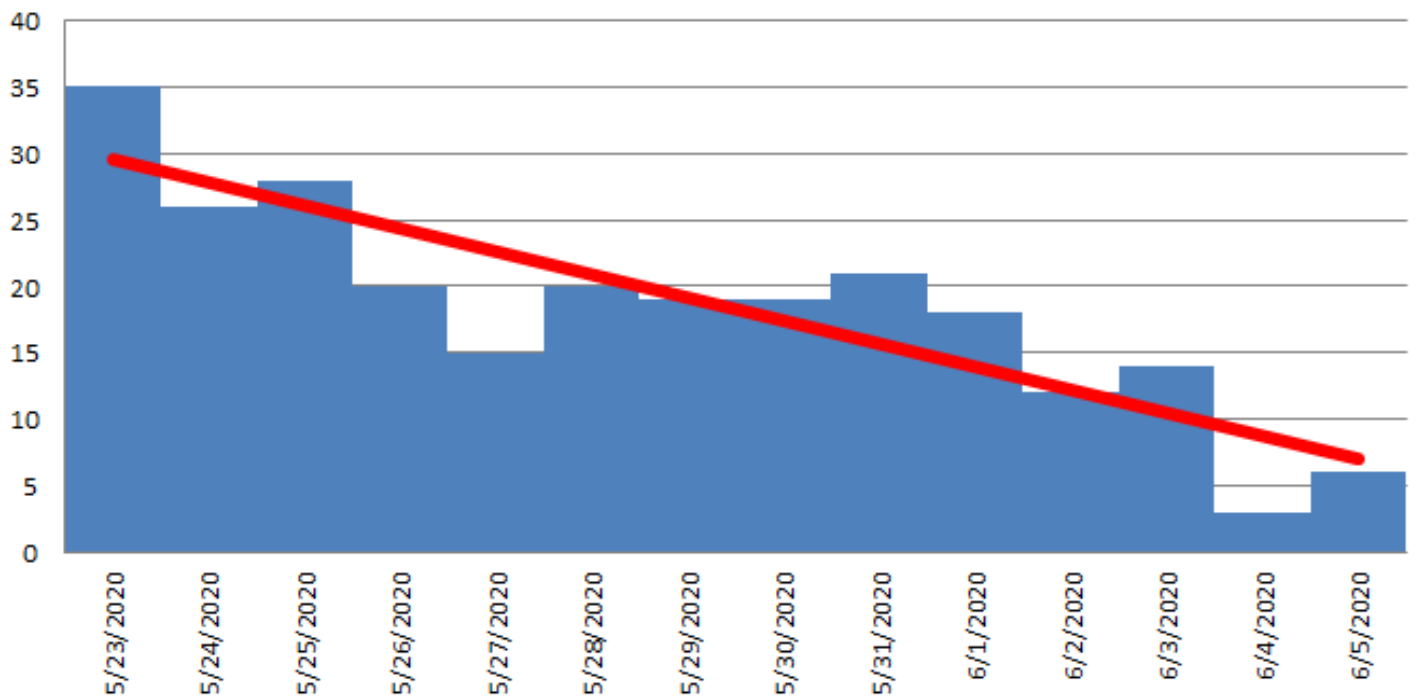
January 1, 2020-June 5, 2020

2-Week Rolling Average and Most Recent 2-Week Linear Trend

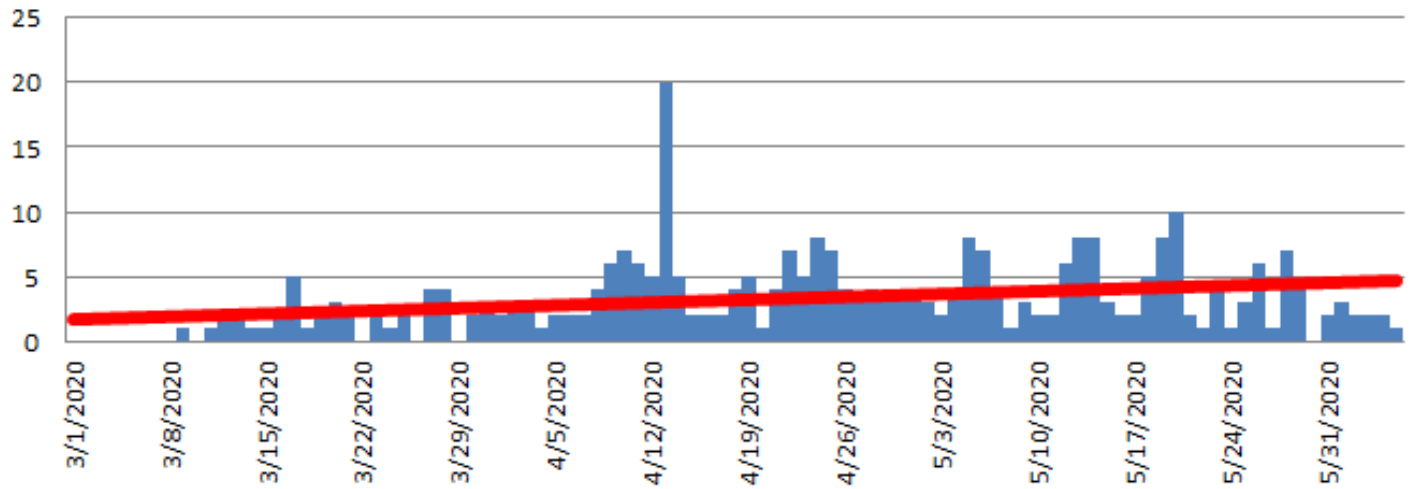
**Ohio COVID-19 Daily Deaths
(2-Week Rolling Average Trend in Red)**



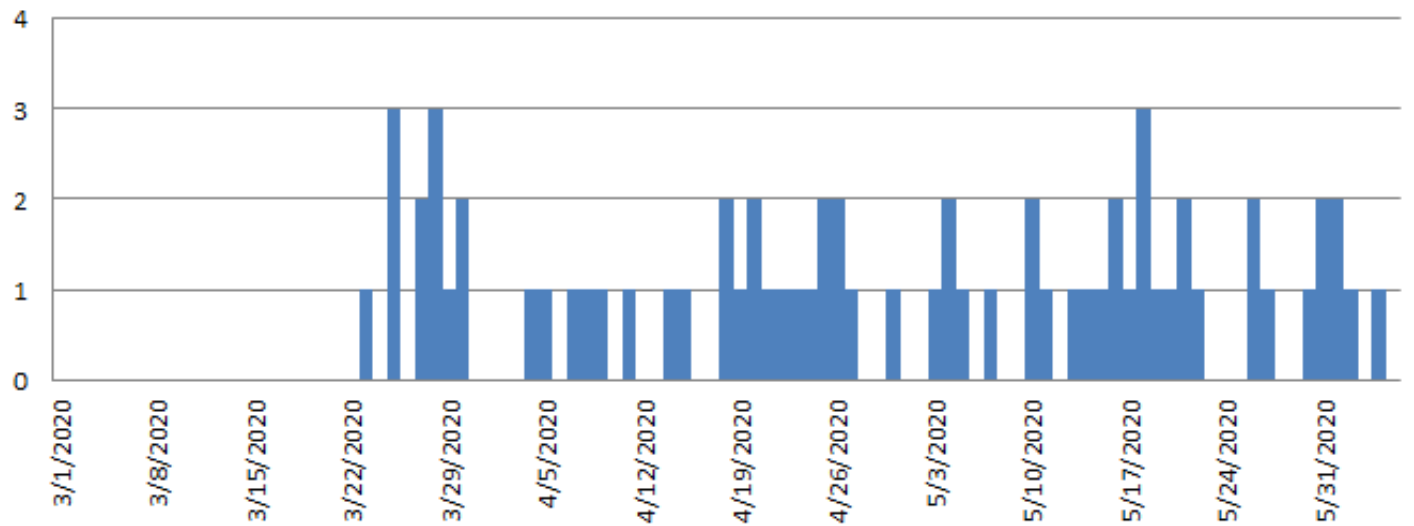
**Ohio COVID-19 Daily Deaths
Most Recent 2-Week Linear Trend**



Geauga County COVID-19 Daily Cases
(Linear Trend Line in Red)



Geauga County COVID-19 Hospitalizations



Geauga County COVID-19 Deaths

