

ADDENDUM NO. 2
Page 1 of 4

VILLAGE OF MIDDLEFIELD, OHIO
WWTP TERTIARY FILTER IMPROVEMENTS PROJECT

Bids for the construction of the Project will be received at the office of the Village Administrator located at Village of Middlefield Municipal Center, 14860 North State Avenue, Middlefield, Ohio 44602, until **Friday April 24, 2026, at 12:00 Noon local time**. At that time the Bids received will be publicly opened and read.

ARCADIS U.S., Inc.
1111 Superior Avenue
Suite 1300
Cleveland, Ohio 44114
216.298.5224
said.abouabdallah@arcadis.com

ADDENDUM NO. 2

April 20, 2026

The following questions were received after the pre-bid meeting and are presented herein with the associated responses.

- Q1. Is a core drilled hole for the 16" UV bypass lines? A wall sleeve as indicated on M-06 would require saw cutting a window out of the wall, new rebar, time to form and pour the new concrete sleeve in place. A core drilled hole would be a quicker install given these tie-ins will require a shutdown. Two rows of link seals could still be used.?
- R1. *See Addendum No 2.*
- Q2. The specification for the eccentric plug valves references rectangular ports. Would Pratt be an acceptable Or Equal as they only provide round ports?
- R2. *Plug valves shall be as specified.*
- Q3. Would it be permitted to increase the size of the temporary opening in the wall to the next control joint to the west of the current demo plan to aid in removal of existing filters?
- R3. *Wall could be removed up to an additional 6'-8" to the west. Prior to start of demolition, Contractor shall submit desired demolition limits for review by Engineer. If additional portion of wall is removed compared to contract documents, wall shall be rebuilt as directed by Engineer at no additional cost to Owner.*

ADDENDUM NO. 2
Page 2 of 4

- Q4. Please confirm all new conduit in the Filter Room is to be PVC coated Rigid conduit?
R4. *Correct, PVC coated rigid is required for Filter Room as shown in the Area Classification Schedule on Drawing E-05.*
- Q5. Please confirm there are existing conduits and light switch on the South wall of the Filter Room that will need to be relocated for the new overhead door.
R5. *Existing conduit for fire alarm and a unit heater will need to be relocated along with 1 duplex receptacle. The nearby light switch is outside the extents of the shown wall demolition. See revised Demo Drawing D-03.*
- Q6. Please confirm the overhead door will be motorized. There was no door schedule found.
R6. *There is only one proposed new overhead door proposed on this project, and it is shown on the drawings and specified with an electric operator.*
- Q7. Please confirm the 48" louver will be motorized. There was no HVAC schedule found.
R7. *There is only one proposed new louver on the project, and it is shown on the drawings and specified with an electric operator.*
- Q8. Please provide what patch materials per the AS-02 concrete slab repair detail should be used. There was no repair mortar found.
R8. *See Addendum No 2.*
- Q9. Please provide details of the UV equipment. We THINK this system has a substantial amount of concrete that needs to be removed within the equipment footprint.
R9. *The available information is shown on the drawings and included in the reference material provided to all plan holders. Drawing D-02 identifies concrete areas, in the existing channel, to be removed.*
- Q10. *The panel (PDC/SCC) shall operate from a 480 VAC, 3 phase, 4 wire, 60 Hz service. Surge protective device to be provided in panel.*
R10. *See Addendum No 2.*
- Q11. When in manual control on/off the UV banks run at 100% power or 0% power. There is no operator-entry for BPL percentage. Please revise.
R11. *See Addendum No 2.*
- Q12. The SCC uses stainless steel enclosures with unpainted interior surfaces, not painted interiors. Please revise.
R12. *The specification paragraph referenced in the question is only applicable to NEMA 12 panels, not stainless steel NEMA 4X enclosures.*

ADDENDUM NO. 2
Page 3 of 4

- Q13. The SCC enclosure is fabricated from stainless steel with an unpainted exterior finish, not a multi coat painted enamel finish. Please revise.
- R13. The specification paragraph referenced in the question is only applicable to NEMA 12 panels, not stainless steel NEMA 4X enclosures.
- Q14. Trojan uses Phoenix contact SPD. Confirm acceptable.
- R14. *The SPD is specified with the "or equal" clause. Various vendors that meet the requirements of the specifications would be considered equal.*
- Q15. UVI signal routes to the PDC, and there is no bank- in-place proximity on a 3000Plus. Please revise.
- R15. *See Addendum No. 2.*

MODIFICATIONS TO THE SPECIFICATIONS

SECTION 03 30 00 – CAST-IN-PLACE CONCRETE – On page 03 30 00-8 – After paragraph 2.6 GROUT, add the following paragraph:

"...2.7 REPAIR MORTAR

- A. Concrete repair mortar shall be pre-packaged, polymer-modified cementitious repair mortar with the following minimum properties:
1. Compressive Strength at One Day: 2,000 psi (ASTM C109).
 2. Compressive Strength at 28 Days: 6,000 psi (ASTM C109).
 3. Bond Strength at 28 Days: 1,800 psi (ASTM C882 modified).
 4. Material shall be listed in NSF/ANSI 61.
- B. Products and Manufacturers: Provide one of the following:
1. Five Star Structural Concrete, by Five Star Products, Inc. Use formulation recommended by manufacturer for the specific application conditions.
 2. SikaTop 122 Plus, SikaTop 123 Plus, SikaTop 111 Plus, or Sikacem 133, by Sika Corporation. Use formulation from among those listed in this paragraph recommended by manufacturer for specific application conditions.
 3. Emaco S88-CA or S66-CR, by Master Builders Inc. Use formulation from among those listed in this paragraph recommended by manufacturer for specific application conditions.
 4. Verticoat, Verticoat Supreme, or Euco SR-VO, by Euclid Chemical Company. Use formulation from among those listed in this paragraph recommended by manufacturer for specific application conditions.
 5. Or equal..."

SECTION 46 66 56 – OPEN-CHANNEL, LOW-PRESSURE/HIGH INTENSITY UV TREATMENT EQUIPMENT – On page 46 66 56-11 – In subparagraph 2.3.M.1.c.1, delete "...The Panel (PDC/SCC) shall operate from a 480 VAC, 3 phase, 4 wire, 60 Hz service. Surge protective device to be included in each panel..." and replace with "...The Panel (PDC) shall operate from a 480 VAC, 3 phase, 4 wire, 60 Hz service. The System Control Center (SCC) shall operate from a 120 VAC, 1 phase, 2 wire, 60 Hz service. Surge protective device to be included in each panel."

ADDENDUM NO. 2
Page 4 of 4

SECTION 46 66 56 – OPEN-CHANNEL, LOW-PRESSURE/HIGH INTENSITY UV TREATMENT EQUIPMENT – On page 46 66 56-12 – In subparagraph 2.3.M.1.d.4, delete "... Manual Power Setting Screen displaying/controlling intensity output of the lamps...". and replace with "...Manual Power Setting Screen displaying intensity output of the lamps, 0% or 100% power...".

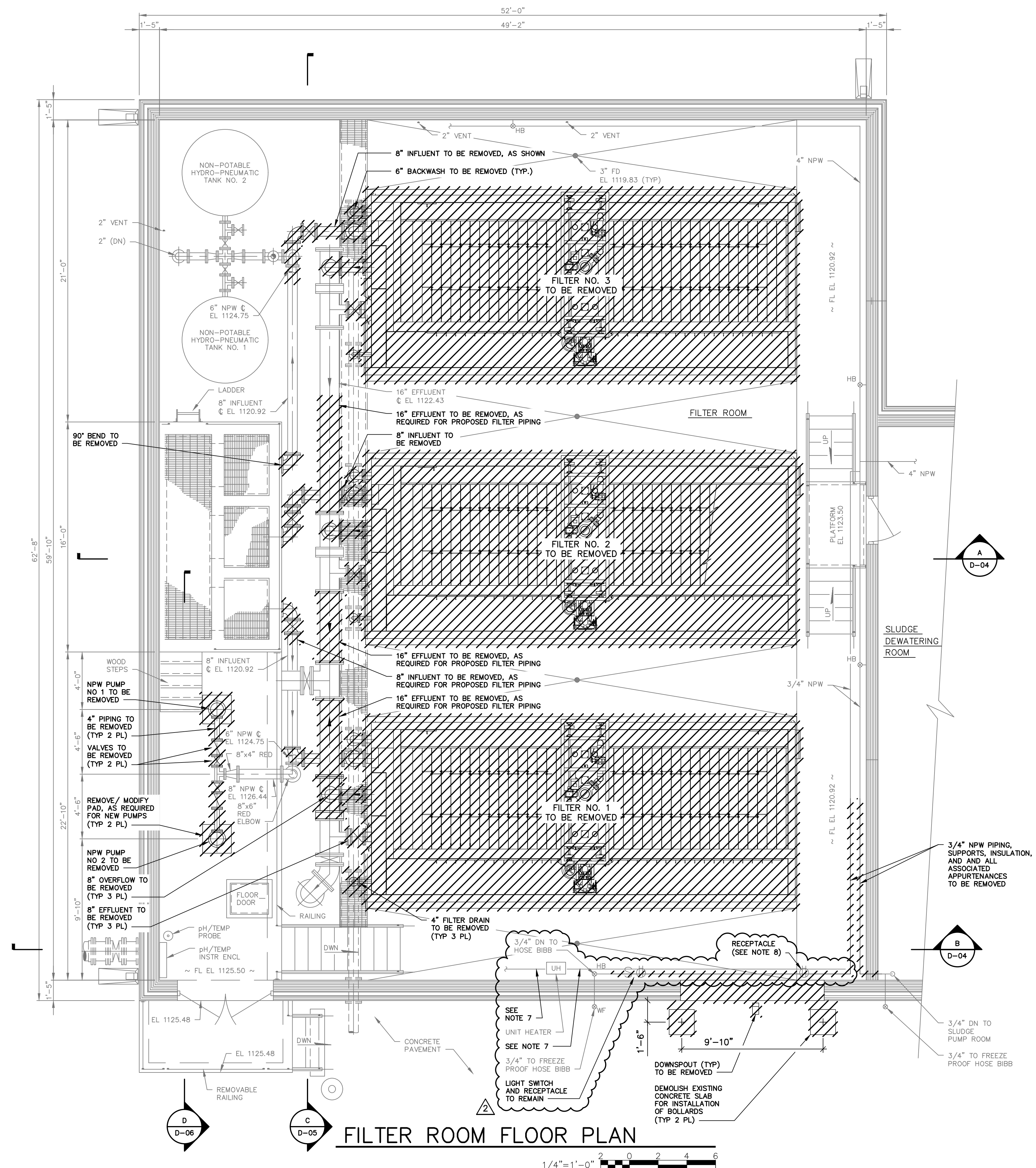
MODIFICATIONS TO THE DRAWINGS

DRAWING D-03 DEMOLITION FILTER/DEWATERING BUILDING FILTER ROOM FLOOR PLAN – Delete Drawing D-03 and replace with the attached Drawing D-03.

DRAWING I-03 UV SYSTEM P&ID – Make the following changes:
Connect the UV Bank Intensity signal directly to the PDC-1 instead of the PLC-SCC.
Remove each ZS-X Bank In Place proximity sensor and associated wiring from the Drawing.

End of Addendum No. 2

User: WELSHANS, Spec: AJS - ICSMOD, File: C:\USERS\WELSHANS\ARCADIS_30283208 - MIDDLEFIELD, OH WWTTP TERTIARY FILTER IMPROVEMENTS - DOCUMENTS\DRAWINGS\01_WIP\02_SHEETS\02_DEMO\03.DWG, Scale: 1:1, SavedDate: 4/18/2026, Time: 09:35, Plot Date: 4/18/2026, Plotter: Mettler, 4/18/2026, 09:36, Layout: 10



- FILTER ROOM DEMOLITION NOTES:**
- REFERENCE SPECIFICATION SECTION 02 41 00-DEMOLITION FOR ADDITIONAL REQUIREMENTS FOR RESTORATION OF EXISTING SURFACES FOLLOWING REMOVAL OF EQUIPMENT AND APPURTENANCES.
 - PIPING REMOVAL LIMITS TO BE FIELD VERIFIED BY CONTRACTOR FOLLOWING COORDINATION WITH FILTER MANUFACTURER.
 - SEE SECTION SHEET D-05 FOR ADDITIONAL LIMITS OF FILTER PIPING TO BE REMOVED.
 - COORDINATE FILTER DEMOLITION AND REMOVAL IN ACCORDANCE WITH THE SEQUENCE OF CONSTRUCTION SHOWN ON SHEET G-06.
 - CONTRACTOR TO PROVIDE TEMPORARY PIPE PLUGS AND BULK-HEADS AS NEEDED TO FACILITATE THE WORK.
 - CONTRACTOR SHALL REMOVE ALL DEBRIS, FILTER MEDIA, ACCUMULATED SOLIDS FROM THE FILTER UNITS AND DISPOSE OF SUCH ITEMS PROPERLY.
 - EXISTING 3/4" CONDUIT/WIRING FOR UNIT HEATER AND 3/4" CONDUIT/WIRING FOR FA DEVICES. RELOCATE AROUND EXTENTS NEW OVERHEAD DOOR OPENING.
 - EXISTING DUPLEX RECEPTACLE. RELOCATE TO EAST OF EXTENT OF NEW OVERHEAD DOOR OPENING AND EXTEND CONDUIT AND WIRING.



NO.	DATE	ISSUED FOR	BY
1	4/20/2026	ADDENDUM NO.2	JMS
1	4/10/2026	ADDENDUM NO.1	SWA